



Indiana State Department of Health

Weekly Influenza Report

Week 10

Report Date: Friday, March 18, 2016

The purpose of this report is to describe the spread and prevalence of influenza-like illness (ILI) in Indiana. It is meant to provide local health departments, hospital administrators, health professionals and residents with a general understanding of the burden of ILI. Data from several surveillance programs are analyzed to produce this report. Data are provisional and may change as additional information is received, reviewed and verified. For questions regarding the data presented in this report, please call the ISDH Surveillance and Investigation Division at 317-233-7125.

WEEKLY OVERVIEW

Influenza-like Illness - Week Ending March 12, 2016	
ILI Geographic Distribution	Widespread
ILI Activity Code	High
Percent of ILI reported by sentinel outpatient providers	4.52%
Percent of ILI reported by emergency department chief complaints	3.23%
Percent positivity of influenza specimens tested at ISDH	87.14%
Number of influenza-associated deaths to date	25
Number of long-term care facility outbreaks	0
Number of school-wide outbreaks	0



Indiana State Department of Health

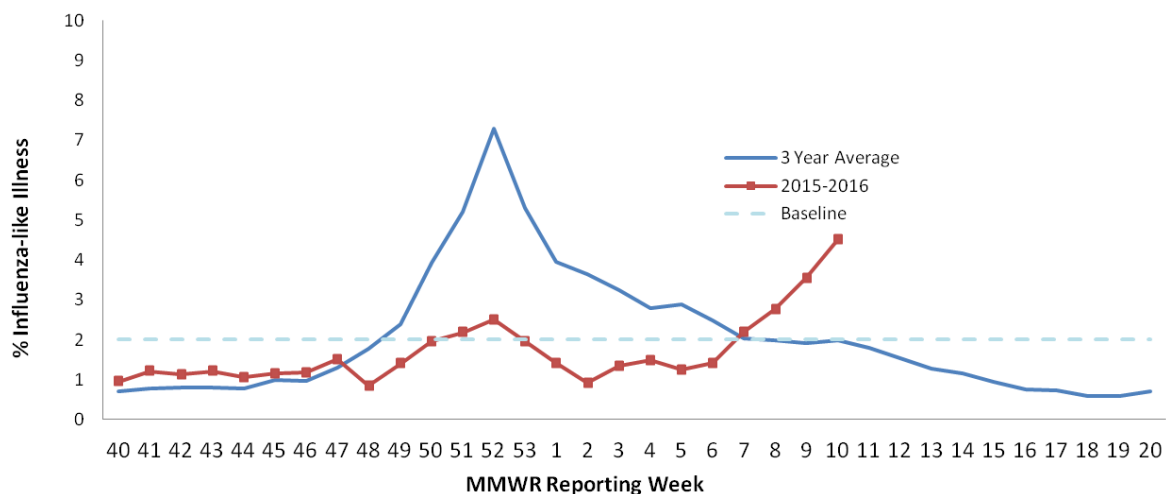
SENTINEL SURVEILLANCE SYSTEM

Data are obtained from sentinel outpatient providers participating in the U.S. Outpatient Influenza-like Illness Surveillance Network (ILINet). Data are reported on a weekly basis for the previous Morbidity and Mortality Weekly Report (MMWR) Week by the sentinel sites and are subject to change as sites back-report or update previously submitted weekly data.

Percent of ILI Reported by Type of Sentinel Outpatient Facility, Indiana, 2015-2016 Season			
MMWR Week	All Reporters %ILI (n)	Universities %ILI (n)	Non-Universities %ILI (n)
10	4.52% (20)	2.91% (6)	4.78% (14)
9	3.54 (23)	1.88 (7)	4.29 (16)
8	2.76 (24)	2.89 (8)	2.67 (16)

Percent of ILI Reported by Age Category in Sentinel Outpatient Facilities, Indiana, 2015-2016 Season		
Age Category, years	Total Number of ILI	Percent of ILI
0-4	50	23.70%
5-24	116	54.98
25-49	30	14.22
50-64	11	5.21
65+	4	1.90
Total	211	--

Percent of Patients with Influenza-like Illness (ILI) in Provider Clinics, Indiana, 2015-2016





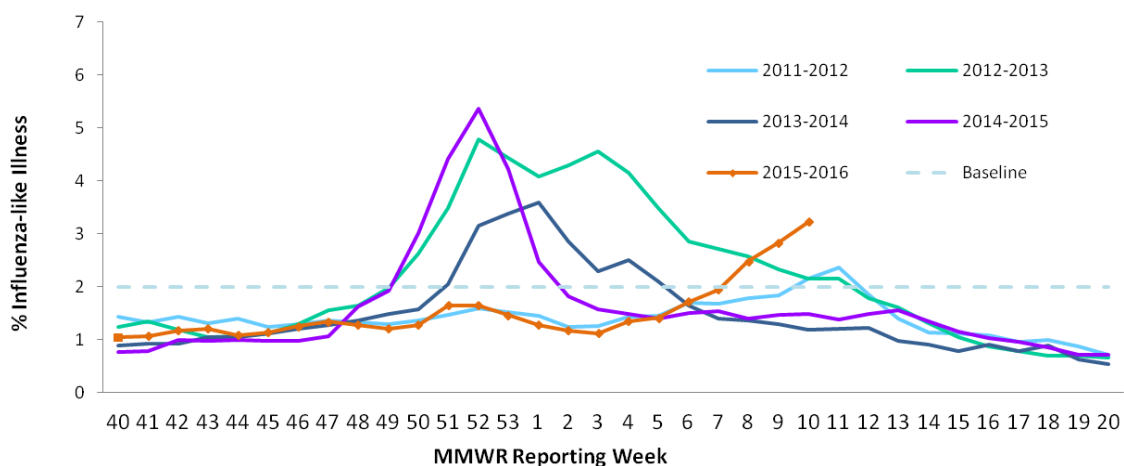
Indiana State Department of Health

SYNDROMIC SURVEILLANCE SYSTEM

Data are obtained from hospital emergency department chief complaint data through the Indiana Public Health Emergency Surveillance System (PHESS). Data are reported on a weekly basis for the previous Morbidity and Mortality Weekly Report (MMWR) Week and are subject to change as hospitals back-report or update previously submitted weekly data.

Percent of ILI Reported in Emergency Departments by District, Indiana, 2015-2016 Season		
	Previous MMWR Week	Current MMWR Week
Indiana	2.83%	3.23%
District 1	2.98	2.39
District 2	2.50	3.24
District 3	1.27	1.71
District 4	2.51	2.38
District 5	2.91	3.72
District 6	4.46	4.65
District 7	2.61	3.52
District 8	2.68	3.91
District 9	3.81	4.08
District 10	2.25	2.41

Percent of Patients with Influenza-Like Illness (ILI) Chief Complaint in Emergency Departments, Indiana, 2015-2016





Indiana State Department of Health

INFLUENZA-ASSOCIATED MORTALITY

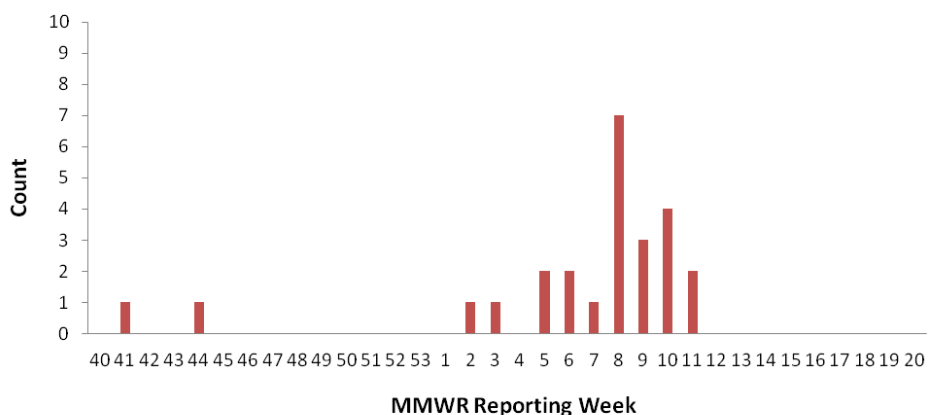
Data are obtained from the Indiana National Electronic Disease Surveillance System (I-NEDSS). Influenza-associated deaths are reportable within 72 hours of knowledge; however, not all cases are reported in a timely manner so data in this report are subject to change as additional cases are back-reported.

Number of Influenza-Associated Deaths for All Ages*, Indiana, 2015-2016 Season	
Age Category, years	Season Total
0-4	0
5-24	4
25-49	2
50-64	12
65+	7
Total	25

**Due to changes in the reporting rule as of 12/2015, influenza-associated deaths are reportable if either laboratory confirmed or listed as cause of death on death certificate. Therefore, case counts are not directly comparable to previous seasons in which influenza-associated deaths were only reportable by laboratory confirmation.*

Counties with ≥5 Laboratory Confirmed Influenza-Associated Deaths for All Ages, 2015-2016 Season			
County	Season Total	County	Season Total
Lake	5		
Marion	5		

Number of Reported Influenza-Associated Deaths by Week of Death, All Ages,
Indiana, 2015-16





Indiana State Department of Health

VIROLOGIC SURVEILLANCE

Circulating Influenza Viruses Detected by ISDH Laboratory*, Indiana, 2015-2016 Season				
PCR Result	Week 10		Season Total	
	Number	Percent of Specimens Received	Number	Percent of Specimens Received
2009 A/H1N1pdm virus	49	70.0%	164	34.0%
Influenza A/H3 seasonal virus	1	1.4%	61	12.7%
Influenza A/H1 seasonal virus	0	0%	0	0%
Influenza B seasonal virus	11	15.7%	26	5.4%
Influenza negative	6	8.6%	213	44.2%
Inconclusive	2	2.9%	6	1.2%
Unsatisfactory specimen [†]	0	0%	11	2.3%
Influenza Co-infection ^Δ	1	1.4%	1	<1%
Total	70	100%	482	100%

* Data obtained from the ISDH Laboratory via specimens submitted from the ISDH Sentinel Influenza Surveillance System and IN Sentinel Laboratories.

[†] Unsatisfactory specimens include specimens that leaked in transit, were too long in transit, or were inappropriately labeled.

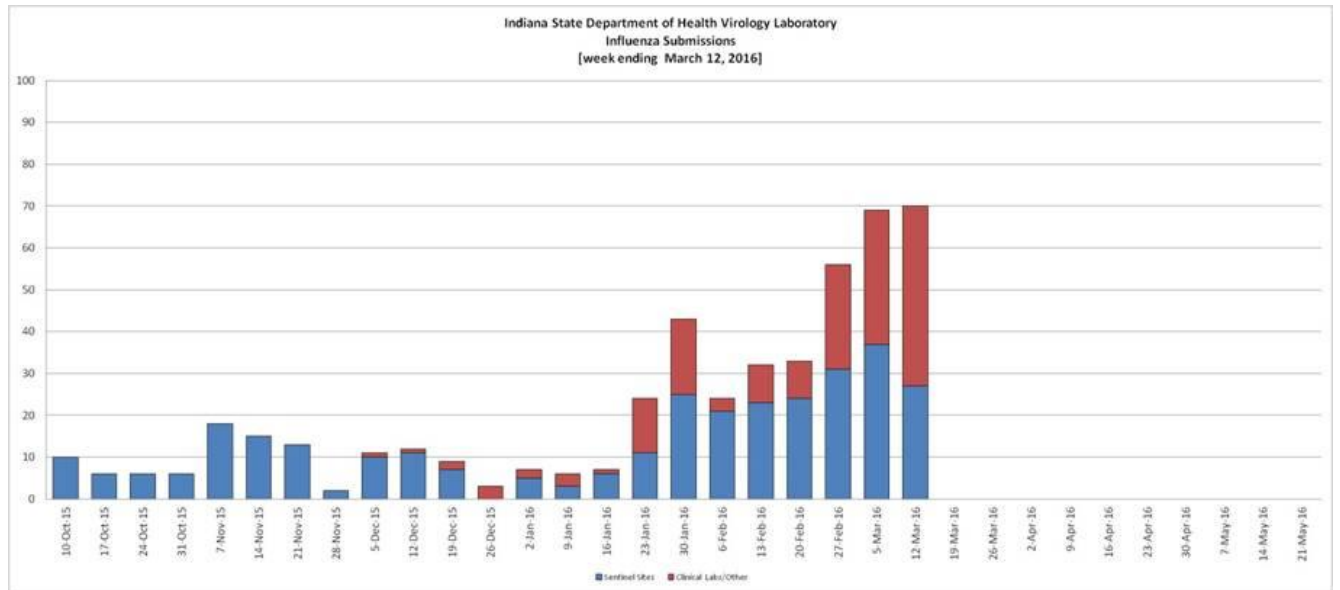
^Δ Influenza co-infection was influenza A/H3 and influenza A/ H1N1pdm.

Circulating Non-Influenza Viruses Detected by the ISDH Laboratory, Indiana, 2015-2016 Season			
Result	Week 10	Season Total (Since 10/1/15)	Early Surveillance (9/1/15 - 9/30/15)
Adenovirus	0	6	0
Coronavirus 229E	0	0	0
Coronavirus HKU1	0	0	0
Coronavirus NL63	0	0	0
Coronavirus OC43	0	0	0
Enterovirus NOS	0	0	0
Enterovirus/Rhinovirus	0	2	1
Human Metapneumovirus	0	0	0
Parainfluenza 1 Virus	0	1	1
Parainfluenza 2 Virus	0	1	0
Parainfluenza 3 Virus	0	1	0
Parainfluenza 4 Virus	0	1	0
Rhinovirus	0	0	0
Respiratory Syncytial Virus	0	1	0
Total	0	13	2



Indiana State Department of Health

VIROLOGIC SURVEILLANCE (GRAPH)





Indiana State Department of Health

FLU REVIEW

Flu Resources

- The CDC offers many [influenza resources for health professionals](#), including detailed clinician summaries addressing [vaccination](#) and treatment with [antiviral medications](#).
- The [Immunization Action Coalition](#) recently updated its "[Influenza: Questions and Answers](#)" handout to reflect the current 2015–16 ACIP recommendations. The handout covers both general information about influenza and more specific vaccine-related questions, and is suitable for patients, parents, and the general public.

Flu News and Related Studies

- Influenza activity in the United States is still increasing and remains elevated above the national baseline. Influenza A (H1N1) viruses have been the most common in recent weeks. The number of states reporting widespread flu activity has increased to thirty-seven, including Indiana; all fifty states report at least regional levels of flu activity. View the [map](#) of weekly influenza activity in the U.S. and the latest [FluView report](#) for more about current influenza activity, trends, and impact throughout the United States (CDC).
- The Indiana State Department of Health (ISDH) has issued a [press release](#) regarding the rise of flu-related deaths in Indiana, strongly recommending that Indiana residents receive the influenza vaccine if they have not already.
- A study analyzing trends in reasons why pregnant women do not receive influenza vaccination revealed a greater awareness about the flu vaccine over time, but also greater safety concerns, indicating potential areas of focus for future vaccine promotion efforts ([Vaccine](#)).

For Further Information, Visit:

www.in.gov/isdh/25462.htm

www.cdc.gov/flu

www.flu.gov